

PetGazette

Western North Carolina

January – February 2016

Volume 5 - Issue 1



Events

AARF started
Drag Queen Bingo
Puppygrams
Winterfest

Health

Dental Care Month
Feline Stress
Pet Food Labels
Winter Grooming

Feathered Friends

Biltmore St. Bernards

Memorials

Events Calendar



Typhoon, one of The Thundering Herd dog team to visit Winterfest Smoky Style in Maggie Valley

Calendar of Events January - February 2016

January

Sat. - 1/2 - 10am-3pm. SARF Pet Adoption Day at Sarge's Animal Rescue Foundation, 256 Industrial Park Drive, Waynesville, NC. Also 1/9 and 1/16. sargeanimals.org

Wed. - 1/6 - 6-8pm. AHS adoption event at Sanctuary Brewing, Hendersonville, NC. ashevillehumane.org or 828 761-2001.

Sat. - 1/9 - 10am-3pm. SARF Pet Adoption Day at Sarge's Animal Rescue Foundation, 256 Industrial Park Drive, Waynesville, NC. Also 1/16. sargeanimals.org

Sat. - 1/16 - 10am-3pm. SARF Pet Adoption Day at Sarge's Animal Rescue Foundation, 256 Industrial Park Drive, Waynesville, NC. sargeanimals.org

Sat. - 1/16 - 10am-2pm. Hard 2 Recycle Donation Collection Event, West Asheville. ashevillehumane.org

Fri. - 1/22 - 11am-2pm. AHS Adoption Event at Tractor Supply, Brevard Road, Asheville. ashevillehumane.org or 828 761-2001.

Sat. - 1/23 - 10am-5pm. Repticon Reptile and Exotic Animal Show at WNC Ag Center, Fletcher, NC. reptiday.com

Sat. - 1/23 - 11am-2pm. AHS Adoption Event at Tractor Supply, Weaverville, NC. ashevillehumane.org or 828 761-2001.

Sat. - 1/23 - 9:30am-3pm. Pet First Aid/CPR class. Fee. aroundtownhound.com

Sat. - 1/30 - By appointment. Adolescent dog socialization class with Trish Loehr, Dog Behavior Professional. (212) 203-2896.

February

Thru Sunday, 2/14. BWAR Valentine Puppies. Send your special someone a visit with a warm puppy, a rose, a balloon, a card and sweet treats. See article page 16, or bwar.org, or 828 505-3440.

Fri. - 2/5 - 6-11pm. Drag Queen Bingo to benefit BWAR at US Cellular Center. VIPs at 6pm, General Admission 7:30, barely legal in Asheville festivities ensue about 8pm. Tickets, specifics at bwar.org or 828 505-3440.

Fri. - 2/12 - 11am-3pm. FHS Adoption Event at Petsmart, Bleachery Road, Asheville. Also 2/13. foothillshumanesociety.org or 828 863-4444.

Sat. - 2/13 - 11am-3pm. FHS Adoption Event at Petsmart, Bleachery Road, Asheville. foothillshumanesociety.org or 828 863-4444.

Fri. - 2/26 - 6pm. * Wild game dinner at Haywood County Fairgrounds, 758 Crabtree Road, Waynesville, NC. Sponsored by Haywood Community College Wildlife Club. winterfestsmokystyle.org

Sat. - 2/27 - 10am-6pm.* Winterfest Smoky Style at Maggie Valley Festival Grounds. Sled dog and K-9 demonstrations, timbers-

ports, International Weight Pull Association, Cherokee Nation, food, vendors. Family friendly, leashed dogs welcome. Admission \$5 adults, \$3 children, \$0 dogs. See schedule page 10, article page 11.

winterfestsmokystyle.org

Sun. - 2/28 - Time TBD.* Brunch at Cataloochee Guest Ranch, Maggie Valley open to public. Opportunity to mingle with mushers after brunch. winterfestsmokystyle.org. *Proceeds from Winterfest Smoky Style events will benefit Friends of the Haywood County Animal Shelter.

March

Save the Date

Tu. - 3/8 - All day long. Dine to be Kind to benefit AHS. 15% of proceeds at over 50 area restaurants to help homeless pets. List of restaurants, full details at www.ashevillehumane.com or 828 761-2001.

Ongoing

Please call or email to confirm events since schedules can change.

Every Wed., Sat., Sun. - 10am. BWAR. The Outward Hounds Hiking Club meets at the shelter to take dogs on hikes. Great 1½ hour enrichment activity. Visit volunteer@bwar.org for details.

Every first, second, third and fifth Satur-

day, 12-3pm. CPC gives out spay/neuter vouchers at Hendersonville PETCO.

Every second and fourth Tuesday, 6pm. Volunteer Orientation at Sarge's Animal Rescue Foundation, 256 Industrial Park Drive, Waynesville, NC. sargeanimals.org.

Every fourth Sat. - 10am-1pm. CPC gives out spay/neuter vouchers at Hendersonville Tractor Supply.

Every Wed., Sat. - BWAR PetSmart Cat Adoption Events. Times vary. Call 828 808-3440 for schedule.

Every Sat. & Sun. - 10am-5pm. Furever Friends Cat Adoptions. Petco, 825 Brevard Road, Asheville.

Every Sat. - 12pm. PAPC Puppy Play dates at its dog park. All vaccinated puppies under 1 year welcome for safe socializing.

Every Sat. - 2pm. PAPC All Dogs Play dates at its dog park.

Every Sun. - 12pm. PAPC Small breed - under 30 lbs. - play dates at its dog park.

Every Sun. - 2pm. PAPC Rough Players Play Party. All healthy and friendly dogs welcome.

Every Sun. - 10am-2pm. AHS Hiking Hounds. Volunteers take shelter dogs for hike.

Every First Sat. - 11:30am-1pm. Volunteer orientation at AHS, 14Forever Friends Lane, West Asheville. volunteer@ashevillehumane.org.

Legend: AHS=Asheville Humane Society AKC=Asheville Kennel Club BRHS=Blue Ridge Humane Society BWAR=Brother Wolf Animal Rescue CAAR=Charlie's Angels Animal Rescue CPPI = Community Partnership for Pets Inc. FHS=Foothills Humane Society HKC=Hendersonville Kennel Club SARF = Sarge's Animal Rescue Foundation WNC DFA = Western North Carolina Dog Fanciers Association

Valentine Drag Queen BINGO

PRESENTED BY **Brother Wolf ANIMAL RESCUE**

FRIDAY, FEB. 5 | U.S. Cellular Center, Asheville, NC
TICKETS @ WWW.BWAR.ORG. ALL PROCEEDS BENEFIT PETS IN NEED.

Happy New Year!

Are you looking forward to 2016?

The **PetGazette** staff is stoked for it.

Yes, the world is a little scary at times. OK, all the time. And yes, whatever political side you're on, you're sure that if the other side wins, the country as we know it will disintegrate. So given all this, why on earth would we be looking forward to 2016?

You share the reason with us already: it is the continued companionship of our furry, feathered, finny friends. It's the mission of **PetGazette** to help you do that. You will find in this issue the same reasons for optimism for 2016 as we have found. In the following pages, you will meet the generous pet people of Western North Carolina who are busier than ever thinking up more ways to help pets and their people: They are creating new non-profits to benefit animal welfare groups. Creating new education projects on pet handling for kids. Raising funds to donate needed items to K9 units.

You will meet the knowledgeable local experts who share their expertise on the importance of proper pet care - for all kinds of pets. And here's the best part of **PetGazette** - at least we hope you think so - FUN. **Winterfest Smoky Style in Maggie Valley! Drag Queen Bingo at the US Cellular Center! And Dine to be Kind** at restaurants all around Asheville in early March.

Now here's the pause for a commercial: We hope you'll see the ads here not as an



intrusion but as a resource. If you buy local from the businesses you see here, and support rescue organizations through the events you see here, you support **PetGazette**.

We'd love to hear from you. Send us a message on our Facebook page - and be sure to Like **PetGazette Asheville**.

Yes, there will continue to be challenges for all of us, both personal and professional. But remember, no matter what else the New Year brings, it will bring a purr, woof, neigh or chirp from our companions that always see us through. So we are looking forward to 2016, and hope you are too!

Yours,

*Carol and Jim Marks,
Hunter and Rosie, and four nameless fish*

PetGazette Resource Guide

Please refer to ads in this issue for how these businesses can help you.
They make PetGazette possible.

Art & Photography

Fast Cats Photography pg.17
Kate VanNoorden pg.17

Boarding and Daycare

A Dog's Day Out pg.11
A Groom with a View pg.13
Buckeye Kennels pg.13
Dog House Doggie Daycare pg. 4
Top Dog Kennel pg.12

Cleaning Services

Ideal Finish Mobile Detailing pg. 3

Equine Services

Apple Valley Mobile Equine pg.6

Groomers

A Dog's Day Out pg.11
A Groom with a View pg.13
Buckeye Kennels pg.13
Calling All Cats pg. 7
Canine Crown n Glory pg.4
Canine Shear Heaven pg.14
Dog in Suds pg. 8
Dog Oasis pg. 7
K-9 Klips pg.12
NU-Dog pg. 6

Hotels (pet friendly)

Aloft Asheville Downtown pg. 15

Health & Wellness

Dogabed pg. 8

Organizations

Asheville Kennel Club pg.18
Asheville Pet Sitters Assoc.pg.14

Outdoor Structures

Carolina Storage Solutions pg. 4

Petsitters

Asheville Pet Sitters Assoc.pg.14
Little Friends pg.12

Rainbow Bridge

4 Paws Farewell pg.19
Best Friends Pet Cemetery pg.19
Pet Cremations pg. 19

Rescue/ Spay Neuter

Brother Wolf Animal Rescue pg. 2
Charlie's Angels Animal Rescue pg. 4
Asheville Humane Society
by Ace Hardware pg.16

Services

The Fire Training pg.10
Gloria Berlin Insurance pg. 5
Ideal Finish Mobile Detailing pg.3
Elizabeth Brown, CPA pg.11

Stores

Ace Hardware pg.16
Blue Ridge Pet Supply pg.14
Bone-A-Fide Pet Boutique pg.13
Patton Avenue Pet Company pg.15
Pet Source pg.13
The TailGait Market pg.12
WAG! A Unique Pet Boutique pg. 7
Weaverville Pet Pantry pg.16
Woof Gang Bakery pg. 6
Woof in the Woods pg.18

Trainers

Loehr Animal Behavior pg.16
Lucky Dog Training pg.17
Specialized K9 Services pg.18

Treats

Finest Fetch pg. 20

Veterinarians

4 Paws Farewell pg.19
All Pets Animal Hospital pg. 14
Apple Valley Mobile Equine pg.6
Asheville Veterinary Associates pg.13
Cat Care Clinic pg. 5
Charlotte Street Animal Hospital pg.17
Charlotte St. Animal Rehab & Daycare pg.15
Healthcare for Pets pg. 4
Mountain Animal Hospital pg. 12
R.E.A.C.H. Animal Emergency Hospital pg.10
Skyland Animal Hospital pg. 8
The Pet Vet on Patton pg. 9
Western Carolina Veterinary Surgery pg. 6

Table of Contents

Events

AARF Started - 15
Drag Queen Bingo - 9
Puppygrams - 16
Winterfest - 11
Reptile Show - 15

Health

Dental Care Month - 6
Feline Stress - 5
Pet Food Labels - 7
Winter Grooming - 14

Feathered Friends - 13

Memorials – 19

And Furthermore...

Biltmore's St. Bernards - 18
Celebrity-rescued Pets - 17
Kid to Kid - 8
Pets at Work - 16
Summer Camps - 4
Therapy & Support Dogs - 12



PetGazette

Published bimonthly by Marks Media.

PetGazette focuses on the fun and care of pets in WNC. It is written by local experts for local pet lovers. The opinions and recommendations of contributors are their own, not necessarily those of **PetGazette**.

Phone: 828 633-1348

Mail: PO Box 151, Candler, NC 28715

Contributing Photographer:

Louise St. Romain,

FastCat Photography Studio.

Webmaster: **Eagle Soars Marketing**

Graphic design and layout by

Intellicode Inc (www.intellicodeinc.com).

Copyright 2015 by Marks Media.

All rights reserved. Reproduction in whole or part without written permission is prohibited.



Entire **PetGazette** home office staff.

Carol Marks, Publisher

publisher.petgazette@gmail.com

Jim Marks, Editor

editor.petgazette@gmail.com

Hunter, Golden Retriever

VP Customer Relations

Rosie, ShihTzu/Terrier

VP Credit & Collections



Read us online at www.petgazetteasheville.com!

Specials for Pet Owners!

Get all your riding buddy's hair out of your car or truck

Mobile unit
fully equipped
with water
and electric

• We come
to you!
• Packages
available



www.idealfinish.com | 828-528-1597





Canine Crown and Glory Pet Salon

Where We Treat Your Pet Like Family

- All Breeds **Show Quality Grooming At Affordable Prices**
- **Crate Free** Environment
- Feather Extensions, Coloring, Nail Polish, **Hand Crafted** Bows Included
- Lavender & Coconut **Oil Treatments**
- **Pickup And Delivery**



828-515-0220

caninecrown@gmail.com
2114 New Leicester Hwy
Asheville, NC 28806

charliesangelsanimalrescue.com

**Please let me in.
Just for a little
while.**



One of our biggest needs at Charlie's Angels Animal Rescue is foster homes. If you could let me live in your home for a brief period, your kindness would open up space at the Safe Haven Shelter. Then...many more of my friends would be saved!

Call Claire Today! 828-693-9331



5526 Hendersonville Rd
Fletcher, NC 28732

Camps for Kids and Shelter Pets, Part I

by Ryan Jo Summers

We have just turned the page on a bright new year. Even though it's cold outside, it's never too early to think of summer camp for the kids. Have you considered one that connects children's love of animals and shelter pet's need for contact, shelters across the country are uniting pets with summer campers.

The benefits are countless. Spending time at a summer camp builds self-confidence and self-esteem for youngsters. It builds social skills, leadership skills and a willingness to try new things. *Psychology Today* stated campers become more resilient to life's stressors (February 2, 2012). Children also make lasting friendships.

Animal shelters bring suitable animals for interaction. Depending on the camper's age, they may instruct the children on how to train basic obedience and manners to dogs who need it. They might learn proper pet care and safe handling. Younger or shy children might simply snuggle with pets who only want to be loved. The interaction make the animals more adoptable when they return to the shelter. The lessons stay with the children far beyond the summer.

In addition to hands-on time with furry animals, kids also partake in arts and crafts, songs and campfires, field trips, and most normal summer camp experiences, which will vary from camp to camp. Spaces fill up fast, so early registration is important. Camp prices will also vary. Each camp is slightly different so thoroughly check to see what is expected for

your little camper.

In our region, www.CrayonsandCollars.com/shelter_programs_for_kids has two listings in NC, four in GA, three in SC and four in TN. In North Carolina, contact either the Humane Society of Charlotte NC 704-337-0534 and SPCA of Wake County, Raleigh NC 919-772-2326 for information or the Crayons and Collars website. In South Carolina, Spartanburg Humane Society in Greenville offers another program; Camp Love-A-Pet for grades 5-10. Contact 864-583-4805.

There is a wonderful short video at <https://aawl.org/summer-camp> which shows children interacting with a variety of animals. Although produced in Arizona, it does show what local shelters are offering campers.

Beyond shelter animals, the Nature Center of WNC hosts "Wild Weeks" for grades 1-7 and can be contacted at 828-298-5600. A search of www.mom.me/pets will show "12 Amazing Summer Camps for Animal Lovers" (March 20, 2015) all over the US and beyond. More locally, in Durham NC, there is The Leaping Lemurs Science Camp which is more science driven for older children. They can study and interact with lemurs instead of Labradors.

Regardless of where children and pets come together, there is bound to be joyous laughter and wagging tails. At the end of the camp, they will both return better for the experience.

Ryan Jo Summers is a local writer and long-time animal advocate. You can learn more about her, see her pets, or contact her at her website: www.ryanjosummers.com. 🐾

Quality veterinary care for your pets and the information you need to give them a happy healthy life.



Health Care for Pets

(828)891-4848

312 Banner Farm Rd.
Mills River, NC 28759
healthcareforpets.net



\$25 Exam

New clients only, one per household.

**Oldest Daycare
In Asheville!**

- Bigger, Modern, Convenient Location
- Private Boarding Suites
- Cattery

1054 Riverside Dr
Asheville, NC 28804

828-252-2323



**10%
OFF**
New Clients



"When you're away, bring your k-9 kid to play"

www.doghousedoggiedaycare.com

Carolina Storage Solutions LLC
STORAGE BARNS * HORSE BARNs * CARPORTS * GARAGES

2327 Asheville HWY - Hendersonville, NC
828-692-8200 - www.DeliveredBarnsAndSheds.com



Elite
12' x 8' Kennel

Quality

Modular Horse Barns
Run-In Sheds
Shed Row Barns
Storage Sheds
Garages & Carports

Traditional
Walk In Coop



Stress Causes Medical Problems in Cats

by Karel Carnohan DVM

Behavioral problems are a leading cause of pets being surrendered or euthanized. In particular, cats inappropriate urination is one of the most frustrating problems facing cat owners. As a vet, I think half of my clowder of fine felines came to me from owners who wanted to euthanize because of this bad behavior.

In addition, a large number of cats who come into my practice have medical conditions caused by stress. Blocked cats, cats with bladder infections, diarrhea, cats who lick themselves incessantly, acute liver disease and even diabetes are all conditions that are often caused by stress. You can avoid bad behavior and costly medical bills by reducing your cats' stress levels with natural enrichments to their environment.

Bored kitties are not happy kitties. Provide opportunities for cats to fulfill their natural need to hunt, play and climb. Use interactive toys that mimic prey, such as a toy mouse that is pulled across a floor, laser pointers, feathers, balls and other toys (Don't use hands or feet so your cat does not develop the bad habit of biting you). Food puzzles and food balls can mimic the action of hunting for prey. Scratching posts and climbing towers are important for healthy cat play. Check the local pet stores and online. There are great new interactive toys available now that can help enrich your kitty's day at home.

Cats are territorial animals and feel threatened when their territory is disturbed. Every cat needs a safe and secure place to retreat to so it feels protected. The cat should have the ability to exit and enter the space from at least two sides so it doesn't feel trapped. Good examples of safe places are a cardboard box, a cat carrier, and a raised cat perch. Cats use scent, posturing, and vocalizations to communicate their unhappiness if threatened. Urine marking is an example of this. If your cat can see or hear that stray cat in the yard, or smell him through an open window or on your shoes, he is threatened and stressed.

Strange smells or sounds, often undetectable or insignificant to us, can increase your cat's stress levels. That loud houseguest with strange smells and unfamiliar habits is incredibly stressful for most cats. Cats mark their scent by rubbing their face

and body on things to establish boundaries – you've seen that black gunk on the door jams. Don't clean these markings off – they are your cat's pheromones, which establish his safe space. This is especially important when a new cat is introduced into the home or there are other changes in the home. The use of synthetic pheromones, such as Feliway®, either as a spray or diffuser, can mimic a cat's natural pheromones and calm a stressed cat.

A cat's life is really quite simple; all she needs are food, water, litter boxes, scratching areas, play areas, and safe sleeping areas. In a multi-cat household, these resources should be duplicated and separated from each other so cats have free access without being challenged by other cats or anything else that frightens them. Cats feel threatened if another cat approaches when they are urinating or defecating. Multiple litter boxes placed in areas where your cat won't be disturbed or trapped will help encourage regular use. Don't put the litter box next to the noisy furnace. Try to find ways to reduce competition among your cats.

If your mild-mannered older kitty can't get to the water bowl without being jumped on by the frisky new kitten, she may avoid it and not get enough water. She may also avoid the litter box for the same reason and hold her urine, raising the risk of a bad bout of cystitis (bladder infection).

Socializing your cats from an early age can help keep stress levels down. Each kitty has his own personality and this will determine how much he likes being handled. Remember to remind guests and all household members not to force interaction and instead let the cat initiate, choose, and control the type of human contact.

Here are some great websites that give you many resources to help enrich your kitty's environment and keep the stress levels and the medical bills down:

www.catvets.com/cat-owners/caring-for-cats/

<https://indoorpet.osu.edu/cats>

www.hauspanther.com



After a long career in finance, Dr. Carnohan returned to school and graduated from the Kansas State College of Veterinary Medicine at the tender age of 50. She bought the Cat Care Clinic of Asheville in August 2013.

We speak CAT!

"Cats are not little dogs. We employ many techniques to reduce the fear your cat has when going to the vet."

-- Dr. Karel Carnohan

We can't make going to the vet any fun, but we can make it a lot less stressful.

Cat Care Clinic of Asheville

- Full-Service Feline Medicine
- Nutrition Counseling
- Master Certified Groomer
- Boarding

**364 Weaverville Hwy
North Asheville
828-645-7711**

Under New Ownership

Nose to Tail

PET HEALTH INSURANCE



- Coverage for accidents, illnesses, and genetic conditions
- Emergency or specialist visits
- Surgery
- Flexible wellness & routine care options
- Flexible deductible & co-pay choices



Gloria Berlin
Agency Owner

Also providing Auto, Home, Life, Commercial coverage

131 Charlotte Hwy
Asheville, NC 28803

828-280-6960
Gloria@GloriaBerlinAgency.com

February is National Pet Dental Health Month

by Melissa Nelson, DVM



MOBILE VETERINARY SERVICES

828•808•8304

Providing:

- U Annual Wellness & Vaccines
- U Lameness Evaluation
- U Pre-purchase Examinations
- U Portable Digital Radiology
- U Reproduction Services
- U Nutritional Counseling
- U Acupuncture
- U Massage

Serving

**Henderson, Transylvania,
Buncombe, Polk Counties &
Surrounding Areas.**

Jennifer A. McKee, DVM

Did you know that most cats and dogs have moderate periodontal disease before the age of four? Many will have mild to moderate disease before the age of two! Yet most pet owners are unaware of the most common disease in their pets, or are unwilling to treat it.

That's why there is a National Pet Dental Health Month. Dental disease is not just "bad breath". It is a condition that can lead to pain, weight loss, tooth loss, and other problems.

Periodontal problems start when bacteria in the mouth form plaque and minerals in the saliva cause the plaque to form tartar. Tartar is the hard, discolored material on your pet's teeth that becomes obvious when pointed out by your veterinarian. Periodontal disease occurs when tartar spreads beneath the gum line and erodes the structures supporting the tooth, leading to tooth infections, gum recession, bone loss, loose teeth, and in severe cases, fractured jaws. The bacteria do not just cause local damage to the mouth. They can also be responsible for infections in the heart, kidneys, and other organs.

When tartar is found on the outside surfaces of the teeth, your veterinarian will

recommend a dental prophylaxis to determine and treat the amount of disease present. Then he or she will recommend a regimen at home to help keep the teeth healthy.


"Dental disease is not just bad breath."

The cost of a dental prophylaxis is not in the cleaning of the teeth. Instead, the bulk of the cost is due to the practice of safe anesthesia, dental x-rays, probing of gingival tissues for pockets to assess tooth and gum health, and extractions,

pain medications and antibiotics when needed. Safe anesthesia often involves blood work and always involves monitoring of important vital signs just like human procedures.

Many people balk at the idea of anesthesia for dental care for their pets. But when you think about it, if you went twelve years without ever brushing your teeth, you'd probably be pretty uncomfortable having them cleaned! Having our gums poked and probed can hurt, which has spawned the concept of sedation dentistry for humans.

The American Animal Hospital Association Dental Care Guidelines state that cleaning a companion animal's teeth without general anesthesia and intubation is unacceptable and below the standard of care.

After a dental prophylaxis, your veterinarian will recommend products to help delay or prevent periodontal disease. These products are designed to decrease the number of sedated procedures your pet will require. They are not a substitution for veterinary visits, however, and most pets will require several dental procedures during their lifetime to keep them healthy. 

Dr. Nelson graduated from the Michigan State University College of Veterinary Medicine in 2002. She first practiced in Michigan, and then practiced in Hickory, NC before becoming the new owner of Asheville's Skyland Animal Hospital.



Dr. David T. Crouch

Nurturing the Human-Animal Bond...with State-of-the-art Care

- Board-certified Veterinary Surgeon
- Serving the Tri-state area since 2000
- Orthopedic Surgery
- Neurosurgery
- General Surgery
- Minimally Invasive Surgery



Referral Animal Hospital, P.A.

1 Atkins Street, Arden, NC 28704
Voice: (828) 684.0019 Fax: (828) 684.4808

www.wcvs.org




Woolf GANG BAKERY & GROOMING
Your Neighborhood Pet Store®

Asheville

Receive 10%
off gourmet
baked treats
with this ad!

- Full Service Grooming
- Premium Pet Foods
- Gourmet Baked Treats
- Stylish Accessories
- Plush and Tough Toys
- Gifts and Much More!



(828) 650-9950

33 Town Square Blvd, Suite 140, Asheville, NC 28803

Make Your Dog Feel and Look Like a Champion!



Vicki Schroader
Over 27 years experience

Matt Snyder, Stylist
Certified Trainer
Graduated NY School Dog Grooming
20+ Years of Experience



Nu-Dog Pet Styling

2560 Chimney Rock Rd. Hendersonville
828-231-8714 Easy on & off Exit 48A(1-26)

Deciphering Pet Food Labels

by Michael Rosenstock

Let's cut to the chase: Pet food labels are misleading when it comes to comparing types and brands of pet foods.

The Guaranteed Analysis reporting on pet food labels is based on what the federal Food and Drug Administration (FDA) calls "As Fed Basis" testing. This testing doesn't account for the water content of the product being tested. The water acts to dilute the results of all reported nutritional data: protein, fat and fiber.

The FDA stresses the importance of this issue on its website

"To make meaningful comparisons of nutrient levels between a canned and dry product, they should be expressed on the same moisture basis"

"Dry Matter Basis" uses a formula that shows us guaranteed analysis of multiple products on equal footing by removing all moisture. This is important for pet owners, and is of critical importance if protein or fat needs to be controlled for medical reasons. The formula

is simple and made simpler by the fact most of our cellular phones have a calculator. Here are the steps:

1. Determine the amount of **dry matter** in a product. Dry Matter is equal to 100% minus the moisture indicated by the label. For example, if the Label reads the moisture is 75% then dry matter is 100% minus 75% and equals 25%.

2. To find the actual percentage of nutrients in the product, take the Dry Matter total (in this case 25%) and divide the listed percentage of the ingredient by that number and multiply by 100. So in this case, protein, fat and fiber percentages are really:

a. Label reads Protein is 10% but our formula: 10 divided by 25 times 100 reveals the true number: 40%.

b. Label reads Fat is 5% but truth be told: 5 divided by 25 times 100 equals 20%.

c. Label: Fiber is 3% so 3 divided by 25 times 100 equals 12%.

Look at how some pet foods compare. Pedigree Adult Complete is the top selling

dry dog food according to *Supermarket News*. I compared the dry and wet version of that brand for nutrient content, plus the wet and dry products of a brand currently reviewed as one of the top in the industry.

The totals listed under Dry Matter Basis are the rounded result of using the formula and thereby removing all moisture from the Guaranteed Analysis on the product labels. Now we can compare pet foods on an even playing field. As the tables show, Pedigree's canned food has almost twice the protein of their kibble.

Adding up our protein, fat and fiber leaves a lot of room, particularly with dry foods. What's left? The remainder is the good, the bad and sometimes the ugly. Needed vitamins and minerals do make up some of the volume and are critical to your pet's health. But the rest is filler. The word filler shouldn't put you in a panic, as everything we eat includes components that aren't nutritionally important. It's the amount of filler and its contents we care about.

To determine if it's good or bad, check the

ingredients. The FDA requires that ingredients be on the labels in the order of ingredients listed based on their volume, high to low. You probably don't want a food whose label begins with ingredients nutritionally low in value, such as grains. Grains are full of calories and little else useful to our pets. Be careful to look for the words you can't pronounce as they are often manmade, or created through extensive processing. Look out for preservatives BHA and BHT. They are very common in commercial dog foods, have been linked to certain cancers, and are potentially toxic. Citric Acid (also known as vitamin C and ascorbic acid) is often listed as a preservative, but is a natural ingredient that should be part of a pet's diet, with the only potential concern being that 85% of it comes from China.

So choose carefully. "Because Pets Are Family, Feed Them Like Family".

"Interpreting Pet Food Labels", Center for Veterinary Medicine, U.S. Food and Drug Administration.

Michael Rosenstock is the founder of Finest Fetch, a new dog treat company.

Pedigree Adult Complete (dry)			Pedigree Choice Cuts in Gravy (canned)		
	Label	Dry Matter Basis		Label	Dry Matter Basis
Moisture	12%		Moisture	82%	
Protein	21%	24%	Protein	8%	44%
Fat	10%	11%	Fat	3%	17%
Fiber	4%	5%	Fiber	1%	6%
Total		40%			67%

* Percentages are rounded up to the nearest whole number

Zignature Zssential Formula (dry)			Zignature Zssential Formula (Canned)		
	Label	Dry Matter Basis		Label	Dry Matter Basis
Moisture	10%		Moisture	78%	
Protein	32%	36%	Protein	11%	50%
Fat	16%	18%	Fat	5%	23%
Fiber	5%	6%	Fiber	1%	5%
Total		60%			78%



ZEN PUPPY

Holistic therapy sessions on your dog, cat, or other small animal in the comfort of your own home!



Sessions run 30-45 minutes and include acupressure, massage, and chakra balancing. Small/medium dogs + cats, \$35; large dogs, \$45.

Additional Services
Iridology: \$65
Moxibustion Therapy: \$20
Herbal Remedies + Flower Essences: \$15-45

Visit www.equizen.biz/zen-puppy-corner.html



Nicole Watts
CAAMT, CVT
864-276-8536
nicole@equizenbiz.com
fatcow.com

YOUR PET WILL THANK YOU FOR IT!

Dog Oasis

Grooming Salon



Compassionate grooming in a relaxed environment

Gentle Bathing & Grooming For All Breeds.

Over 15 Years Experience

- **Crate Free** Setting
- We use **Natural** Shampoo & Grooming Products
- Flea, Oatmeal & Specialty Baths At **No Extra Charge**

Grooming by appointment only.

828 299-7242
2068 Hwy 70
Swannanoa NC 28778

Historic Downtown Hendersonville



a unique Pet Boutique

QUALITY
Food & Treats
Toys & Games

DISTINCTIVE
Collars ~ Leashes ~ Attire

STURDY
Outdoor Gear
& LOTS more!

OPEN DAILY
Pet & Owner
Friendly!



231 N. Main St. 828/697-7799
Hendersonville, NC
www.wagpetboutique.com

Kid to Kid Pet Safety Program Started

Starting in January, a new program to teach elementary school children how to treat dogs appropriately so that both child and dog stay safe will be given in Asheville elementary schools. The schools scheduled for the first part of the program are Avery Creek, Glenn Arden, Fletcher, and Glen Marlow.

The program is the brainchild of Joey Beckham of BMW of Asheville, who with her longtime pal and sidekick Beemer is a fixture at many area events raising money for pet non-profits. Recently, Beckham explained how the program came about. "We were doing our annual 'XMAS is for Kids' event here, where children are brought to have their picture taken with Beemer", she said. "The kids just loved being with Beemer, but you could tell that at first some of them had to be shown how to approach her and pet her and so forth. So we thought wow, wouldn't it be great if a lot of kids knew this".


Beckham decided to bring the information to the kids by using other kids, rather than by video or other traditional teaching methods. Twins Ruby and Christel Schober, often seen with Beemer at events or the BMW dealership, were the perfect choice. The twins are now 11 years of age, and they have been leading and loving on the big, friendly pit bull since they were five. Beckham decided to have Ruby and Christel lead Beemer into the classroom

and demonstrate proper procedures. "This will get the kids attention and give them a real hands-on experience", she laughed. "We think kids will pay more attention to other kids and also feel 'well if they do it, I can do it'".

Many children may not know the basics of a dog's nature. For instance, kids may not know that dogs meet and evaluate the world through their sense of smell. Because of this, the dog may be unsure of a stranger, and can also tell if that stranger is nervous. This affects how the dog may react. So the twins will share that they never go near a loose dog. Never do anything with a dog, such as petting or going into its fenced area, without a parent or other grown-up present.

If the kids are with an adult and another person has a leashed dog that they want to approach, they ask first if they can meet the dog. They ask the dog owner about any interaction with the dog such as "Can I pet your dog" or "Can I give your dog a treat".

In addition to dog safety, basic care of a dog will be covered: keep it clean with no fleas, don't let it run loose or stay tied up, and for the older kids, spay and neuter.

If you want your organization to have Ruby, Christel, Joey and Beemer come to share their knowledge, call Joey Beckham at 828-681-9902. 

Kennel Club donates safety cage to Hendersonville police K-9 unit

When funding for the Hendersonville Police Department (HKC) K-9 Unit was cut, officers turned to the community for help in acquiring the equipment needed to do their jobs safely and effectively. The non-profit Hendersonville Kennel Club (HKC) quickly answered the call.

Club members learned about the K-9 Unit's need through one member's conversation with owner Larry Jandreau of Hendersonville's Pet Source pet supply store. Once the need was identified, HKC members voted unanimously to fund a safety cage, officially called a police vehicle K-9

Transport Insert. Training Sgt. Jennifer Drake thanked the club on behalf of the K-9 Unit.


"The Hendersonville Police Department K-9 Unit is very thankful to have the support of the Hendersonville Kennel Club," Drake said. "We rescued a bloodhound, Snoopy, and he is now trained and certified with his handler, Jon Wing. The Hendersonville Kennel Club," she added, "has made it possible to outfit the patrol

car with the dog kennel to ensure the safety of our new K9."

In the past, the HKC has participated with the Hendersonville County Fire Department by donating 13 pet oxygen masks to 12 different county fire/rescue units as well as the Sheriff's Immediate Response vehicle. The fire department used one of these masks when

responding to a fire within two weeks of receiving it.

HKC has also worked for some time with Anne Buckner and Lisa Greene and the Meals on Wheels program of the Hendersonville Council on Aging by donating cat and dog food

for delivery to the homebound with their meals. Money to fund the club's public service programs is generated by the annual Blue Ridge Classic of the Carolinas dog show at the WNC Agricultural Center, presented jointly with the Spartanburg Kennel Club over Memorial Day weekend. The 2016 event will take place Friday, May 27 through Monday, May 30. 



HKC officers present check to HPD officers. Left to right: HKC President Judith Ann Smith, HPD Lt. Mike Vesely, HPD Officer Jennifer Drake, HKC Treasurer Elizabeth Ann Brown.



Melissa Nelson, DVM • Genorah Warner, DVM • Luke Anderson, DVM
1588 Patton Ave.,
Asheville, NC 28806
828-252-8644 • www.skylandanimalhospital.com



dogabed®

COMFORT, SUPPORT, AND TRACTION FOR PETS OR PEOPLE.



Handmade in Weaverville, NC

dogabed@gmail.com | www.dogabed.com



Dog In Suds

Pet Grooming

Natural Grooming Products
Gentle Grooming
High Levels of Sanitation and Safety



Caring for your Pet
is our Business

108 S. Washington St.
Hendersonville, NC 28739
(828) 697-7878
www.doginsuds.com

Only US Cellular Center can hold Drag Queen Bingo



Bingo players raise cards to show readiness to begin at past Drag Queen Bingo.

by Jim Marks

It would probably be banned in Boston. But Asheville has welcomed it with such open arms that the Drag Queen Bingo to raise funds for Brother Wolf Animal Rescue (BWAR) has had to move to the giant US Cellular Center for the February 5, 2016 festivities.

The event has become so popular that past events sold out. The 2014 Drag Queen Bingo sold out at Asheville's Crowne Plaza Hotel and Resort and both nights of the two-night edition of the 2015 event were filled with bingoists at the Double Tree Biltmore. Thus the move to the US Cellular Center for 2016 and the Fourth

Annual bannable mischief and mayhem.

In addition to a new location, the February 5 event will feature five drag queens who are all local. Seems someone finally realized, "This is Asheville! Why would we have to import drag queen talent?"

The drag queens are being sponsored by O.Henry's/The Underground of Asheville even though the activities will be above ground.

Men wearing women's clothes, or "drag", have been around at least since Shakespearean times, or even before. For centuries, women were not generally allowed to perform on

stage, so female roles were played by men in women's clothing. Some say the practice goes back to Roman times, but it is difficult to say. How does one tell a male toga from a female toga? The etymology of "drag" as a term meaning men in women's clothing suggests the term comes from the slang of 19th century theater, when men acting as women wore long skirts that dragged on the floor. In the 1980s and 1990's, New York City was home to a large number of trendy clubs featuring performances by drag queens. The clubs were extremely popular, and it wasn't uncommon to hear someone say, "The best looking woman I've seen lately is a guy."

DJ Mitch Fortune, owner and top spinmeister at Remix Weddings will provide music, observations and calls of letters and numbers for the 2016 version of Drag Queen Bingo. The music will be designed to get the crowd up and dancing, and Fortune reputedly has a black belt in "Get the crowd up and dancing". Some reviews of his wedding performances even mentions that he gets the grandparents of the happy couple up and on the dance floor. So if you go to Drag

Queen Bingo, and why would you not, be sure to wear dancing shoes.

The US Cellular concession stands will have snacks and drinks available for purchase since the General Admission ticket does not include any food or beverages. But if you purchase a

VIP admission, you will be treated to a catered cocktail dinner party, a complimentary drink ticket, VIP seating at the event, and VIP photos with the drag queens. (What better memento to leave your grandchildren?)

The VIP cocktail party will start at 6pm. The doors will open for the General Admission folk at 7:30pm, and the event will end for everyone by 11pm. BWAR has teamed with Shay Brown Events to insure everything will go as smoothly as possible and make the event even more one of



Drag Queen beauty poses for photos at past event.

a kind than it already has been.

Ticket prices for the 2016 Drag Queen Bingo were not available at PetGazette press time, but will be available by January 8 on the BWAR website, which, *mirabile dictu*, is bwar.org. Get your tickets soon, before Drag Queen Bingo is banned even in Asheville.



the
Pet Vet
on Patton
Animal Hospital

- Grooming
- Boarding
- Day Care

Open Saturdays

Monday, Tuesday, Wednesday, Friday:

7:30 a.m. - 6:00 p.m.

Thursday: 7:30 a.m. - 6:30 p.m.

Saturday: 9:00 a.m. - 7:00 p.m.

Open 6 days a week

232-9990



Located off Patton Ave. by Sam's Club
2 Hansel Ave. Asheville, 28806

petvetonpatton.com

Valentines to Thundering Herd to benefit Sarge's Rescue

When can a Valentine's card, or cards, to a Siberian Husky, raise money for Sarge's Animal Rescue Foundation? The answer is simple: The card can raise money for Sarge's when it is sent to the sender's favorite member of The Thundering Herd dog team with a check for Sarge's inside. The Husky gets the love, Sarge's gets the money.

That's how the Third Annual Valentine's Hearts for the Herd fundraiser works. The first two Hearts for the Herd fundraisers raised about \$2,000 each. Definitely worth barking

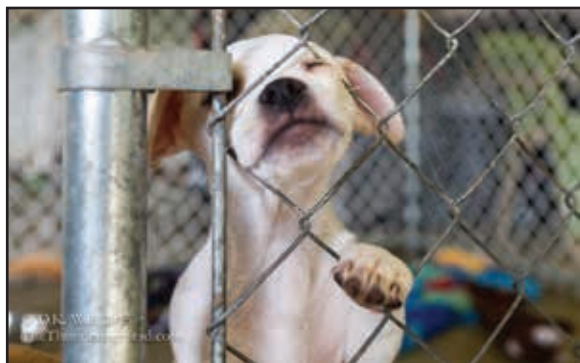
about. But this year's effort is expected to work better than ever because the Youth of Sarge's will be driving this year's event.

Those who follow The Thundering Herd.com blog are probably already aware that Herd members Qannik and Cheoah joined the Herd after a stay at Sarge's. So it is easy for them to understand why Sarge's holds a special place in the hearts of all The Thundering Herd fans. They also know that Qannik and Cheoah

probably have a head start on the other Herd members - Typhoon, Queen Natasha the Evil, Kiska and Frankie. But nothing is over until the Valentine cards are counted.

Once the card counting is over there will be prizes for card senders in three categories: For a person who sent a card to the dog that received the most Valentines; for a person who sent a card

to the dog that generated the most money for Sarge's Animal Rescue Foundation; and for a person drawn at random from all those who sent cards to their favorite member of The Thundering



One of the wonderful pets available at Sarge's

Herd.

Specific rules for the Third Annual Valentine's Hearts for the Herd contest will be posted on The Thundering Herd.com blog soon, if they have not already been posted by the time you read this. In any case, think about which member of the Herd to send a Valentine to, and then send it. Cards should be sent to: Dog's name, PO Box 1835, Maggie Valley, NC 28751.



Winterfest Smoky Style Schedule of Events

Friday – February 26, 2016

Wild Game Dinner

Sponsored by Haywood Community College Wildlife Club

Haywood County Fairgrounds – 6:00 p.m.

758 Crabtree Road
Waynesville, NC 28785



Saturday – February 27, 2016

Maggie Valley Festival Grounds – 10 a.m. – 6 p.m.

Admission \$5 adults, \$3 children

Opening Ceremony – 10:30 a.m.

Featuring Jerry Wolfe
Pisgah High School ROTC
Tuscola High School ROTC

Exhibitors and Performers – 11:00 a.m. – 5:00 p.m.

Law Enforcement K-9 Demonstrations
Timbersports
International Weight Pull Association
Music
Cherokee Nation
Food, Vendors and more!

Sled Dog Demonstrations – 11:30 a.m., 1:00, 2:30, & 4:00 p.m.

Bonfire – 5:00 p.m.

Sunday – February 28, 2016

Mingle with the Mushers – Details at www.winterfestsmokystyle.com

Cataloochee Guest Ranch – 3374 Soco Road, Maggie Valley, NC.

Pets Seek New Energy Policy



Darby and Caelie, April Dennis and Kam Parker of The Fire Personal Training Studio.

Lately, pets have been sending us texts, or private messages on Facebook, to say their humans are not feeling as energetic as they once did. Then, loyal and concerned friends that they are, they ask if we can help their people re-energize.

"We know walking helps," they say. "But we hate seeing them reluctant to 'go for a walk' instead of looking forward to it like they used to. Isn't there something you can do?"

Our answer, of course, is an emphatic "Yes". In fact, there are several things we can do. We start by finding out if the pets' people are getting

enough fresh water and the appropriate amount of healthy food every day. Proper hydration and nutrition are the foundations for becoming healthy and energetic again.

Here at The Fire Personal Training Studio, we specialize in helping people 40 to 85 regain the spunkiness they once had. So if you think your pet might be one of those contacting us, come join us. After just 8 workouts in the first month, friends, family and pets will notice a happier, healthier, more energetic you.

Your pet will kiss your face with happy licks! Your friends and family will make positive comments. And you'll be glad you got your spunk on again.

Call us for an appointment to find out more about our program and our Pet Owner friendly environment. Your pet will thank you for it.

Kam Parker, Certified Master Physical Fitness Specialist, The Cooper Institute of Aerobic Research, is a Personal Trainer with over 25 years of combined experience in weight loss, weight lifting, fat-burning, endurance training, rehabilitation, injury recovery, and motivation! Partner April Dennis, a Cooper Institute Certified Personal Trainer, has 12 years experience in personal transformation. If your pet is asking you to have more energy, contact The Fire at 505-7080, Kam@havefunburnfat.com, or visit the studio at 736 Tunnel Road.



Advertisement



EMERGENCY AND SPECIALTY ANIMAL HOSPITAL

Quality Care With Compassion

- Open 24/7 -

- One hospital providing comprehensive emergency and specialty care
- Board Certified Surgeon and Internist on staff
- Serving all of WNC
- Continuous overnight monitoring by doctors and staff



677 Brevard Road, Asheville, NC 28806
(828) 665-4399
www.reachvet.com

Maggie Valley amateur musher and Thundering Herd will join professional mushers at Winterfest Smoky Style

by Jim Marks

The 2016 Winterfest Smoky Style will be a “go” on Saturday, February 27 at the Maggie Valley Festival Grounds regardless of rain, sleet, snow, ice or freakishly warm sunshine. But whatever the weather, local amateur musher Kirk Wall will not be demonstrating.

“I will be there to learn from the real experts,” Wall said. “These mushers are the real deal and want to share their knowledge.”

Expert mushers from as far away as Pennsylvania and Indiana will be giving demonstrations on the festival grounds on Saturday. Attendees to the festival will be able to meet the mushers and dogs in the “musher village” and watch demonstration runs on a track set up on the Festival Grounds.

Sunday, the mushers will move up the mountain to Cataloochee Guest Ranch for a brunch open to the public. That afternoon, ranch General Manager Dr. Mary Coker will take the mushers out on the various trails of the 1,000 acre ranch high above Maggie Valley.

“Our goal is to identify trails suitable for hosting mushing races at the ranch in future years,” said Wall. “The cool weather at the 5,000 foot elevation and the trail network should be perfect for spring racing. The mushers will help us pick the trails. And, with a lot of work, we will be able to host sanctioned races for the mushers in future years.”

What mushers call “mid-distance” races vary from 200 to 400 miles long. And the ultimate competitions like the Iditarod are 1,000 miles or

more. “But we are interested in sprint races,” said Wall. Sprints are shorter races based on the size of the teams. Sprint races for two dog teams are two miles long; four miles long for four dog teams, and six miles long for six dog teams.

While the mushers attending Winterfest are spring racers, some of the dogs they bring have competed in Alaska’s Iditarod. That race covers over 1,000 miles in the dead of winter when even daytime temperatures can be well below zero. Most people would get cold just thinking about being out in those conditions, but Siberian Huskies love them.

“The professional’s dogs are highly trained, world class athletes,” Wall said. “Comparatively, my dogs are couch potatoes.”

His interesting and humorous blog, The Thundering Herd.com, reports regularly on the indoor and outdoor activities and antics of his six Siberian Huskies. Regular blog readers will easily understand why Wall and the Herd are not competing at Winterfest. “I could only wish to compete with mushers of this caliber,” Wall said. Nevertheless, Wall and at least some of his Huskies will definitely be at the Winterfest Smoky Style.

Wall is one of the organizers of the event and will bring Thundering Herd members to meet Winterfest visitors. He will use the occasion to tell people a little about the Siberian Husky breed and dry land mushing with wheeled “sleds”. These were developed because even Alaska and Canada don’t have the right conditions year around, and sled dogs need constant work to stay in shape. Wheeled

“sleds”- think big tricycle - let mushers and dogs practice even without the packed snow that is needed for classic dog sledding.

The dogs usually run silently, doggedly following their leader or responding to the “gee” or “haw” commands of their musher. Like human athletes, the Huskies warm up before competition and cool down when the event is over.

Wall was one of the organizers for the inaugural Winterfest last year, and has again been involved in the planning and organizing. Post-event surveys showed that the 2015 edition was greatly enjoyed by attendees, but was perceived as a dog event rather than a winter event. Wall said that he and the other organizers wanted to keep the draw of the dog events – dry land mushing and K-9 education and demonstration by area law enforcement officers – while adding other attractions. To that end there will be timbersports, weight pulling competitions and demonstrations by the International Weight Pull Association, music, appearances by representatives of Cherokee Nation, food, and vendors. Survival expert Spencer Bolejack, who starred in the “Hillbilly Blood” reality show and operates the Land of the Sky Wilderness School, will also join the Winterfest festivities. The day’s activities will close with a bonfire at 5pm. (See adjacent page for a schedule of events.)

Families attending Winterfest are welcome to bring their own dog or dogs – leashed – but must follow some restrictions. Visiting dogs will not be allowed to approach the sled dogs or the

law enforcement K-9’s for the safety of everyone concerned. There will be a musher’s village where the sled dogs will be set up for everyone to meet them and that area will be off limits to outside dogs. On the other hand, a separate weight pull area will offer a novice pull in which any dog of any size will be allowed to experience weight pull. The person and dog will be taught how to do it safely and be supervised by the weight pull staff.


Well-known musher Dan Rehak will be one of the experienced mushers giving demonstrations and educational talks at Winterfest. Rehak has a Siberian husky micro-kennel in Pittsburgh and does recreational mushing on both dry land and snow. He has a team of huskies that are all retired from serious, competitive long distance competition. Sprite, Pauly, Bang and Casey help him introduce dry land mushing at events from North Carolina to well north of his base in Pittsburgh. Rehak also does action photography at dog events.

Cruz Schubert, a popular musher from Indiana, will be attending her first WinterFest as a mushing demonstrator with her four Siberian Huskies. She is excited to share her philosophy of “Spiritual Enlightenment through Sled Dogs.”

Winterfest Smoky Style is jointly sponsored by the Haywood County Tourism Development Authority. Admission is \$5 for adults, \$3 for children and \$0 for dogs. For the latest information available about the event, go to www.winterfestsmokystyle.com or www.visitncsmokies.com. And tell them PetGazette sent you.

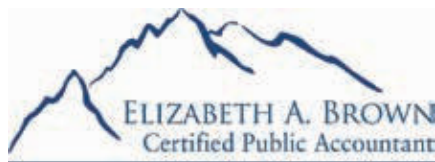


Expertise in: Kennels • Veterinary Practices • Animal Non-Profits



Member AKC, HKC, Obedience Club of Asheville, Blue Ridge King Charles Spaniel Club, others

You need someone who understands the unique taxation of animal-related businesses.



ELIZABETH A. BROWN
Certified Public Accountant

elizabeth.brown.cpa@gmail.com 828-575-9575

Calvin

You and Your “Best Friend” Will Love

A DÖG’S DAY OUT!

Daycare and Grooming

Rain or Shine * Indoor/Outdoor Play Areas

Large & Small Dog Play Areas



Bathing & Grooming. Call for Appt.

Mon-Wed-Fri: 7:30am - 6:30pm
Tues-Thurs: 7am - 6:30pm Sat: 8:30 - 5:30

942 Maple Street, Hendersonville
(3 blocks from 5 points & US 25 & N. Main St. intersection)

828-692-0200 adogsdayoutnc.com



**Asheville's favorite
pet grooming salon!**



We offer full service
pet grooming that not only leaves
your pet fresh and clean,
but pampers them
with a pet make over!

Ask us about early drop off and late pick up

**We have 37 year of
combined experience and lots of
wagging tails to show for it!**

**K-9
Klips** Call today
for your
appointment!

(828) 645-3338

www.petgroomerasheville.com
148 Weaverville Highway • North Asheville

Want Peace of Mind — Call

Little Friends
Pet and House Sitting



**Leave Your Pets in the
Comfort of their Home**

Pet Sitting/Overnight Stays
Medication
Home Security/Plants/Mail



Owner, Judy Beacon

- PriorVetTech
with CPR Training
- Associates Degree
(AAA) In Veterinary
Medical Technology

828-808-4350

Therapy and Support Dogs and the Law

by Emily Trimnal

A therapy dog is a pet that provides affection and comfort to any number of people. The primary job of a therapy dog is to allow unfamiliar people to make physical contact with it. Therapy dogs are commonly encountered at hospitals, nursing facilities, schools, and after school programs. Facilities such as these generally require proof of training and certification with a verified therapy animal program such as **Therapy Dogs International**. Therapy dogs also routinely are required to pass a Canine Good Citizen test.

Legal Rights of a Therapy Dog

Unlike service dogs, therapy dogs have no additional legal rights outside of their designation as a pet. Therapy dogs must be invited into a facility to perform their service. Additionally, therapy dog handlers gain no public access rights with their canine companion. Businesses, hotels, airlines, housing, and other service providers deem therapy dogs as pets and treat them as such. Therapy dogs have no rights to the Fair Housing Act.

Other animals such as cats, horses, pigs, birds, rabbits, and a myriad of domesticated animals can be used and recognized as a therapy animal provided they meet the requirements of the therapy animal certification program.

Emotional Support Dogs

An emotional support dog (also referred to as an ESD or ESA) provides therapeutic support to a person with a mental health

related disability. ESD's have limited additional legal rights that their owners can take advantage of.

Legal Rights of an Emotional Support Dog

Emotional support dogs are basically household pets, and as a result require no special training or certification, nor are they required to carry identification or wear vests. While all dogs provide love and emotional support to their owners, the designation of an animal as an ESA is only applicable to dogs that have been prescribed by a licensed medical professional. The mental health professional must document the client's need for their ESD, typically done in the form of a letter. Certain mental health professionals may go so far as to write a prescription or script for their client's ESA.

Like therapy animals, an emotional support dog has no legal public access rights, except within businesses that have a pet friendly policy. Businesses and hotels deem emotional support animals as pets and treat them as such. Unlike therapy dogs however, ESAs are supported under the Fair Housing Act, with proper documentation. This means that housing that typically has a no pets policy must provide reasonable accommodations for an emotional support animal and its handler.

As with service dogs, the **Air Carrier Access Act** allows that an emotional support dog may travel with its owner on an airplane, without additional fees. Emotional support animals as well as service animals are allowed cabin access.

Fake Service Animals

Unfortunately, people try to cheat the system and take advantage of public access right and fair housing laws by claiming that their pet is a service animal. Attempting to pass off a regular pet as a service animal is illegal. The North Carolina General Statute 168-4.5 addresses this issue:

"It is unlawful to disguise an animal as a service animal or service animal in training. It is unlawful to deprive a person with a disability or a person training a service animal of any rights granted the person pursuant to G.S. 1684.2 through G.S. 1684.4, or of any rights or privileges granted the general public with respect to being accompanied by animals or to charge any fee for the use of the service animal. Violation of this section shall be a Class 3 misdemeanor."

Not only is falsely claiming to have a service animal a misdemeanor, but such an action is detrimental to legitimate service dogs and their handlers. Poorly educated business owners and patrons that are not aware of service animal rights are something that service animal teams encounter on a regular basis. Business owners that are not aware of ADA laws can make things unnecessarily difficult for service dog teams, and some business owners may be unknowingly violating ADA. This is why education on service dogs and differentiation between service, therapy, and emotional support animals is of utmost importance.

Note: This article was modified from the extended piece by Emily Trimnal. The complete article can be read on her blog: <http://ashevilleblog.com/service-dogs-in-asheville/>.



mountain
ANIMAL HOSPITAL
Dr. Sue Reinecke

*Providing Progressive,
Compassionate Care
For Your Pet*

SAVE!
\$10 off

First Visit for New Clients

828-645-1616

Open M-F: 8 AM -5 PM
121 Barnardsville Hwy
Weaverville, NC 28787



The perfect vacation spot for your pampered pet!

Quality Lodging & Professional Grooming

- Complete, professional grooming
- Personal attention & tender loving care
- Green Grass for playtime which runs all day!
- Stress-Free Cattery
- Rated One of WNC's Favorite Kennels
- 1.5 miles off Exit 59



Watch playtime videos at:
[facebook.com/topdogkennel](https://www.facebook.com/topdogkennel)

To reserve a date,
visit us at www.ashevillekennel.com
or email us at topdog@ashevillekennel.com

12 Cavalier Lane,
Swannanoa, NC 28778
828.686.3175



**Essentials and some
not-so essentials
for your dogs and cats**

**Natural and organic foods,
raw, dehydrated, kibble
and cans**

**Where expert nutrition and
taste meet nose to nose!**

- » Herbal Supplements
- » Remedies
- » Treats and Chews
- » Toys
- » Gifts

For the Love of a Dog

(828) 258-1600

www.thetailgaitmarket.com
328 New Leicester Highway, behind Zaxby's

A Happy Bird Is a Healthy Bird

by Larry Jandrew

Bird ownership is unlike any other pet ownership. Birds are unique creatures with human-like actions. Large birds have mental capacities equal to small children. They can reason, solve simple puzzles, speak (sometimes even in complete sentences), and even do simple arithmetic.

Universities have done multiple studies on birds' ability to communicate and interact with humans. Not all bird behavior is mimicking or duplication of actions. Birds tend to bond with one particular human and will often pick up on that human's behavior and actions. My African Grey talks in my voice. My wife is always asking me what I said when it was Frisco talking all along.

A bird's interaction with humans develops through trust. Once their trust is earned they will be at ease and embrace their environment. This can lead to talking, tricks, singing or whistling, and playing with toys. A bird's attention span is short. Learning is done on their schedule. You can tell when they are interested by the way they are acting. They look curious and attentive. This is when they are most receptive to new experiences. Everyday customers coming into Pet Source ask me if I can make them talk. The answer is no. Birds talk when they want to, usually when no one is paying any attention to them. This is also when they are willing to learn new things. Patience is crucial for bird owners. Don't rush or pressure them. Let them respond

on their terms.

A healthy, diverse diet is crucial to your bird's health. Fresh fruits and vegetables, nuts, and a healthy seed diet are important. You want to make available everything they live on in the wild. A good seed diet plus fresh produce will insure they are getting the required balance of vitamins and minerals.

A daily bath is also important. In the wild, birds live in a rainforest and get a natural bath regularly. You can give them a shower or use a bottle to spritz them. This will keep their feathers healthy. Just make sure they do not get cold from their baths. Make it a game and they will look forward to bath time. Sunlight is also important. If you cannot give them natural sunlight, artificial lighting is available to simulate the sun's light.

Rotating toys in their cages will expose birds to new challenges and stimulate their brains. It is always good to have three or four different toys that you can change out periodically to keep your bird interested.

If you learn what your bird's needs are and then provide them, your bird will respond and often amaze you. Birds have long life spans and can be happy and healthy members of your families for years, even decades.

Larry Jandrew has owned Pet Source since 1999. He says: "My goal is to give you the knowledge needed to make your own choice in deciding what to feed your pet."

Bone-A-Fide



Pet Boutique

Wonderful *Local* Products Not Found At Mass Market Stores!

Yummy Dog Treats, Locally Baked, Natural & Organic

Fun Toys, Apparel, Gifts, Leashes — Locally & U.S. Made

Natural Foods & Supplements

Open 7 days a week:
Mon-Sat 11 to 6 & Sunday 12-5

118 Cherry Street Square
in beautiful Black Mountain

(828) 669-0706
www.boneafidepetboutique.com



A Groom With A View



www.AGroomWithAView.com

We Offer:

- No crating
- Outdoor enclosed yard
- Water filtration system that helps dry skin & hair/fur problems
- Critter parents are welcome to stay, watch and chat



Call today!
(828) 505-3267



Going away and not taking Benny?

Let him be our guest and get lots of love and attention from Jamie and our two critters.

\$25 for sleepover until noon the next day

Pet Source



Hendersonville's independently and locally owned full-line pet supply store since 1999.

Natural and holistic products and medications.

Do it yourself dog wash.

Hours of Operation:
Monday - Friday 9:00 - 6:00
Saturday 9:00 - 5:00
Sunday 12:00 - 5:00

(828) 698-6910

1927 Spartanburg Highway,
Hendersonville, NC
www.petsourcenc.com



David Vigee, DVM
Robert Scott, DVM



Robert Scott, DVM
West Office

Compassionate Care
For Your Best Friend

Full-Service Hospital:
Wellness, Preventive Medicine,
Surgery and Dentistry.

Digital xray
Endoscopy
State-of-the-art Lab Equipment



David Vigee, DVM
South Office

1275 Sweeten Creek Rd, Asheville, NC 28803
(828) 274-0646
50 New Leicester Hwy, Asheville, NC 28806
(828) 253-0451

Serving Asheville
for 42 years



Premiere Dog Grooming & Boarding

Providing loving care & a home away from home for your best friends

Grooming

- Full-Service Grooming
- Patient, Gentle Staff
- Natural Based Products

Boarding

- Exercise
- Individual Runs
- Professional Staff

Marie Steele, Owner & Operator

Call for Reservations

(828) 299-9500 • www.ashevillekennels.com
790 Buckeye Access Road, Swannanoa, NC 28778

Find us on:
facebook

Trained Dogs are the Gifts that Keep on Giving

by Kathryn R. Gubista

The 2015 holiday season is over. Frantic shopping for the perfect gift is no longer part of your “To Do List”. Holiday parties are memories, decorations are packed and Christmas trees are piled on street corners. Holiday gifts are stowed away in closets, drawers, desks, dressers, shelves, etc. However, when gifting a live animal, tucking them away in a drawer and forgetting them is highly frowned upon. Live pets are fur babies (mammals), feather babies (birds) and scale babies (amphibians, reptiles and fish). They need human interactions and other engaging, species-appropriate activities.

Dogs are a Lifetime Commitment

Getting a dog is just the beginning of your journey together. If the new addition is a puppy, this is the best opportunity to get off to the right start. Raising a puppy involves fun and games coupled with gentle guidance and focused consistency. The first 16-weeks of a pup’s life are critical for socialization and bonding. Age-appropriate training during their first year lays the foundation for a harmonious relationship for the rest of their lives. Although puppies and adolescent dogs can learn cute tricks at an early age, strengthening the dog-human bond is vital. After they have grown into their paws, ears and the rest of their bodies, real training can begin.

Benefits of Trained Dogs

Benefits of having a trained dog will positively change your life forever. Humans benefit from their relationship with dogs through stress reduction, increased feelings of well-being,

enhanced sense of security and protection, and being a source of motivation to achieve fitness goals, just to name a few. The mere presence of a dog is a source of serenity that provides an overall sense of well-being. Therapy dogs provide TLC to medical patients and school students worldwide. Dogs provide the best protection because they naturally guard their home and family through unconditional love.

Need motivation to exercise? Look no further than the other end of your leash. Dogs provide humans with emotional support, encouragement and a source of motivation to stay physically active. Trained dogs are perfect fitness companions because they thrive on physical activities and are a source of inspiration and motivation for their human companions.

The Greatest Gift of All

Life with a trained dog is a “Walk in the Park”. Trained dogs are “user friendly” because they can go anywhere. Trained dogs are in harmony with life. Puppies are such a beautiful gift, but a trained dog is the greatest gift of all. They are an absolute treasure. 🐾

Kathryn R. Gubista, PhD, offers concierge dog training, dog walks, dog runs and pet-sitting services through Lucky Dog Training Asheville. She has over 30 years of training experience in obedience, tracking, agility, sheepherding, dock diving and fieldwork. The Dog’s Perspective is a training philosophy based on how dogs think. Kathryn is an evolutionary biologist and teaches diverse biology courses in higher education settings.

Cold Weather Grooming

by Kim Slagle

As a groomer, I notice that many people believe it is OK to skip grooming their pets in the winter. The number one reason for this seems to be that they feel the pet will get cold. But that concern is unwarranted for three reasons.

First, know that a cat’s normal body temperature is 101.5 and a dog’s body temperature is 101 to 102. A healthy human is 98.6. So what feels cold to a human usually is comfortable to a pet.

Second, regular grooming keeps the dead coat removed from your pet, which allows your pet to cool and/or heat up the body naturally. Allowing the dead coat to build up creates matting. Matting is uncomfortable and can cause many problems with the skin, coat and regulating the body temperature. Keeping the dead coat removed also allows a dog to grow a healthy winter coat.

Third is the issue of dry skin. Do you notice your pet scratching more in the winter? Pets, just like us, can get dry skin from the cold to heat. Your groomer can offer a good moisturizer during a bath. This is just like putting lotion on your skin to sooth the dry itchy feeling.

Each spring I deal with pet owners and their pets that went all winter without grooming. Usually these pets have to be completely

shaved down. I see a lot of the pet’s skin has an infection and needs antibiotics. This is due to tight matts, dirty and dry or wet coat and skin. The pet owners are upset because the pet isn’t fluffy and furry. They also don’t like being told they should take the pet to a vet to have the skin looked at. For those pets that aren’t quite to the point of a shave down, the owners get a larger bill from the groomer because it took the groomer twice as long to get through the dead coat. All of this could have been avoided by simply grooming the pet during the cold months.

If you do have a short coated pet that can go without grooming in the winter, don’t forget to care for the nails and ears. Sometimes these get over looked and can become an issue. Remember,

keeping the nails trimmed will keep your pet bones and joints in great shape. Having the ears cleaned from dead hair and dirt can keep ear infections down. As always, if you want more information or have questions, contact your groomer. Stay safe this winter and have fun with your furbabies! 🐾

Kim Slagle has worked with animals for over 20 years. She is an experienced groomer currently working at Canine Shear Heaven. Her writing goal is to educate other pet parents about the value of regular and proper grooming for all breeds of dogs and cats.

“...regular grooming keeps the dead coat removed...”



ALL PETS
Animal Hospital
and Rehabilitation Center

828-645-5252
7 Reynolds Mountain Blvd.
Asheville, NC 28804
www.allpetsasheville.com

Compassion Is Our Passion... Quality & Value Our Goal

- State of the Art Medical
- Diagnostic Services
- Complete Surgery
- Dental Care
- Physical Rehabilitation
- Underwater Treadmill, Class IV Laser Therapy, Chiropractic Care
- Boarding and Grooming

Hours:
Mon. 7:30 a.m. - 7 p.m.
Tues. - Fri. 7:30 a.m. - 5:30 p.m.
Sat. 9 a.m. - 1 p.m.
Sun. Closed

Find us on: **facebook**




www.canineshearheaven.com
The groomers at **Canine Shear Heaven** are simply the best in the business! Follow our work on...





828-254-3386 422 | McDowell St. | Asheville, NC



ARE YOU LOOKING FOR A PET SITTER?

www.ashevilleareapetsitters.com

The Asheville Area Professional Pet Sitters Association ... An association of professional pet service providers dedicated to providing premium pet care.

All Members Have Liability Insurance



Blue Ridge Pets
3,200 Square Feet Of The BEST PET SUPPLIES In Western North Carolina!

- All dog and cat foods are free of corn, wheat, and by-products
- Quality, US made treats, toys, leashes & collars
- Local family owned — **GREAT** prices!

Store Hours:
Tues.-Fri., 10-6 PM
Sat., 10-5 PM
Closed Sun. / Mon.

1-828-669-0032 | www.blueridgereef.com
103 WNC Shopping Center | Black Mountain

Reptile Event at Ag Center

The ReptiDay Reptile & Exotic Animal Show will be at the Western North Carolina Agricultural Center, Boone Building, on Saturday January 23 from 10:00 a.m. to 5:00 p.m.. Hosted by Repticon Reptile & Exotic Animal Expos, the event will feature a variety of vendors offering reptile pets, supplies, feeders, cages, and merchandise. In addition there will be live animal seminars and frequent free raffles. Admission: Adults, \$10.00, Children ages 5 to 12, \$5.00, children under the age of 5 are free. For more information visit www.reptiday.com.



Chameleon (For illustration only)

New Rescue Foundation Started

Pet photographer Sheryl Mann and Patton Avenue Pet Company founder Jenna Yarosh have joined forces to establish the Asheville Animal Rescue Foundation (AARF). The group, founded in 2015, will produce and sell pet-themed products. AARF works closely with other non-profit rescue organizations to monetarily support their work through grants aimed directly where funds are needed most.

Yarosh pointed out that AARF is an all-volunteer organization that has no overhead, so every cent of profit from sales will go to companion animal programs. She said examples of the types of programs the foundation will support are spay-neuter clinics, trap/neuter/release programs for feral cats, and emergency veterinary care for low-income residents.

The first products offered by the foundation were a series of Christmas cards featuring rescued pets that were sold at both Patton Avenue Pet Company locations, at the Canine Shear Heaven groomers, and on-line. Mann said that they plan to expand the AARF card line to cover additional occasions beyond Christmas, but that the specific new products to

be added to the AARF line have not yet been decided upon. Possibilities include, but are not limited to, mugs, T shirts, sweatshirts and calendars. (In 2013 Mann and Yarosh had joined forces with graphic designer Sherri Laudemeyer to produce a Dogs of Asheville 2014 calendar to raise funds for Brother Wolf Animal Rescue.)

Further information about AARF can be found at facebook.com/ashevilleaarf.



Examples of Mann photos to be used on AARF merchandise.

Animal Rehab Center & Social Club

A new facility on South Charlotte Street dedicated to the physical and emotional well-being of our canine companions.

Animal Rehab Center

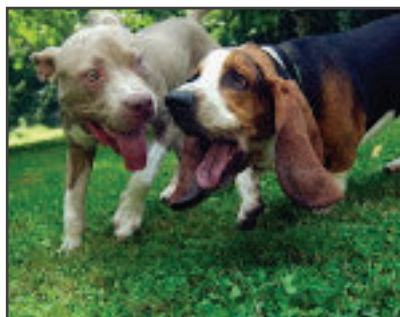
Offering both aquatic and land-based modalities to assist animals in recovery post-surgery or those dealing with arthritis, neurologic disease, or injury. Others benefit from strength conditioning or weight loss.



Call (828) 232-0440

www.CharlotteStreetAnimalHospital.com

Canine Social Club of Asheville



Engaging enrichment facility, meeting the global needs of your four-legged friend. We provide a comprehensive approach to your canine's wellbeing through play, socialization, exercise, and training, while in a safe, fun environment.

Full or half day sessions available.

Call (828) 774-5668

www.CanineSocialClubOfAsheville.com

178 South Charlotte Street Asheville, NC 28801



Welcome Pups!

And Humans Too!

Visit our pet-friendly bar with your furry friend and present this ad to receive 10% off your purchase!

W XYZ® bar
Aloft Asheville Downtown

Aloft Asheville
51 Biltmore Ave.
Asheville, NC 28801

aloftashevilledowntown.com

spg.
Starwood
Preferred
Guest

©2014 Starwood Hotels & Resorts Worldwide, Inc. All Rights Reserved. Preferred Guest, SPG, Aloft and their logos are the trademarks of Starwood Hotels & Resorts Worldwide, Inc. or its affiliates. For full terms and conditions, visit www.aloftashevilledowntown.com.

**PATTON
AVENUE**



COMPANY

THANK YOU!

**FOR VOTING US THE
#1 PET
SUPPLY STORE
THREE YEARS IN A ROW!!**

**Have you checked out our
NEW DOWNTOWN
location yet?**

109 Patton Avenue
2 doors down from Jack of the Wood
Free parking while shopping!

Even more at the new store!

**-Tag Engraving!
-Gifts for the Pet Lover!
-More toys and treats!**

PATTONAVENUEPET.COM

A Cat Named Cat

by Louise St. Romain

Driving onto the used car lot of Apple Tree Honda in Fletcher, nothing looks much different than most other car dealership. Cars are parked neatly in the lot, people walking about, thinking about what they would like to drive and then you see him, sitting next to a SUV, looking very pleased with himself, a cream colored cat with grey tabby markings on his legs and face.

Say hello to Cat, a fixture at Apple Tree Honda for at least the past nine years according to Tim Willis, one of Apple Tree's salespeople. Cat is the last one remaining from a colony of feral cats that had made Apple Tree Honda their home. All of them had received some veterinary care and a spay/neuter procedure through the catch and release program of Brother Wolf Animal Rescue.

The dealership has provided a small kitty hut as well as having his food and water dishes set up just outside of the rear showroom. Unlike many of the animals

that I have written about, Cat is a working animal, keeping down the rodent population and keeping up his constant watch on the facility and the staff and customers coming and going. He might sometimes look like he's napping, but he always knows what is going on.



Cat may not look it, but he is watching.

He is wary and standoffish with people he doesn't know; only showing affection to people like Tim who see him on a daily basis. When I was there, he sniffed my hand but wouldn't let me touch him, moving away when I reached towards him.

With that mindset, most of the dealership's clients probably don't realize that Cat is even there. And I think that is the way he likes it.

<http://honda.appletreeautos.com>.

Louise St. Romain is doing a series of pieces on pets at businesses and is the Contributing Photographer for PetGazette. Her business is Fast Cats Photography.

Puppygram the perfect Valentine's gift

Flowers? Chocolates? Boring. Come on, you can do better than that for your Valentine on Valentine's Day. And, happily, Brother Wolf Animal Rescue (BWAR) has just the thing to warm your recipient's heart without having to rack your brain: A Valentine's Puppygram.

As you decide, an adorable, adoptable puppy, dog or kitten will be brought to your Valentine's home or workplace on Friday, February 12 through Sunday, February 14. In addition to a visit with a furry bundle of love and warmth brought by a Brother Wolf volunteer, the recipient will get a rose, a



A 2014 Puppygram recipient enjoys her Valentine's puppy visit.

balloon, a card, and sweet treats. Puppygrams are great for a partner, spouse, child, parent, grandparent, coworker or friend because everyone loves getting puppy kisses. Especially when they're accompanied by balloons, a card, sweets and a rose or roses. The basic Puppygram includes a single rose, but you can up your gift and your game by including a dozen or more.

Puppygrams reward the giver as well as the getter. When you send a Puppygram, you are also sending a special message. You are telling the recipient that you care enough about him or her to think outside the candy box or the flower tissue. And both you and your Valentine will know that the money for the Puppygram will be used to help orphaned animals in need. Your donation will help BWAR make Asheville a No Kill city by caring for pets that ended up in the shelter through no fault of their own.

All the details for the 2016 Puppygram program were not available at

PetGazette's press time, but should be available on line by the time you have read this article. Go to www.bwar.org/valentine-puppygram for all the information you need to send a Valentine's gift that will be unforgettable and make you unforgettable, too.

Delivery times for Puppygrams are limited, so order yours today. You and your recipient will both be very glad you did.



Does your dog lunge and bark at other dogs? Does your cat avoid the litterbox? Is your horse difficult to load onto the trailer?

Loehr Animal Behavior will help you with personalized treatment plans.

In-home animal behavior consulting and clicker training for dogs, cats and horses



Loehr Animal Behavior

Certified professional dog trainer, certified dog behavior counselor

Trish Loehr
MSc, CDBC, CPDT-KA
212-203-2896

Buncombe, Madison and Henderson counties
www.loehranimalbehavior.com



Weaverville Pet Pantry
828-484-9247

Quality Provisions for your Creature Companions

We Love Our Customers!

BRING IN THIS AD FOR SAVINGS

January
10% off treats

February
10% off winter apparel

Open Mon-Fri 10-6; Sat 10-5
One Merrimon Avenue
Weaverville, NC 28787

828-484-9247
www.weavervillepetpantry.com



Like us on: **facebook.**

"We don't come with a return address."

Asheville Humane Society reunites over 1,000 pets each year with their worried families.

Contacting us within the first 24 hours is the best way to help lost pets get home!



IF YOU LOSE OR FIND A PET, IMMEDIATELY FILE A REPORT:
(828) 250-6430 | lostandfound@ashevillehumane.org

Ad Sponsored by:

ACE Hardware Now carrying: **Blue** **Taste of the Wild**

(Available at Weaverville, North Asheville and Mills River locations)

Ace Hardware Weaverville 61-A Weaver Blvd. Weaverville, NC 28787 (828) 645-8811	Ace Hardware North Asheville 812 Merrimon Ave. Asheville, NC 28804 (828) 505-3672	Ace Hardware South Asheville 1888 Hendersonville Rd. Asheville, NC 28803 (828) 676-0047	Ace Hardware Mills River 3340 Boylston Hwy Mills River, NC 28759 (828) 891-4545
--	--	--	--

Celebrities with Pets from Rescue Organizations

by Lin Sharp

During the holidays our hearts go out to those less fortunate than us and what needs love (and returns love) more than a sweet rescue? If you have recently adopted a rescue know that you place among the most caring celebrities in their nurturing of animals.

Here is just a short list:

Miranda Lambert: Miranda might be the queen of rescues. She found three dogs in a shelter and picked up three more strays. In 2007 she founded MuttNation with her mother, Bev Lambert. MuttNation Foundation is a donation-supported organization with the mission to end animal cruelty, neglect, and homelessness.

Kelly Clarkson: Kelly housed fifty assorted rescues, including goats, pigs, and horses, on her Texas ranch. After watching a televised report on the orphaned dogs from Hurricane Katrina, Kelly adopted one of the featured dogs.

Simon Cowell: Best known for his tough stance on the television show American Idol. Simon is tough on performers but soft on dogs. He adopted two terriers, Squidly and Diddly from a rescue shelter.

Kate Bosworth: In Morocco, the actress picked up a malnourished and dying dog that was covered with fleas and ticks, bathed and medicated her, and arranged to bring her back to the States.

Selena Gomez: Selena has adopted six pups so far. She takes her recent boy, Baylor, on many appearances and photo shoots. Selena adopted Baylor from a Canadian shelter.

Charlize Theron: An active animal advocate, Charlize has rescued eight dogs over the years. After losing them in a short span of two and a half years she found the heart to adopt again.

Hilary Swank: Hilary travels with Karoo and Rumi and takes them to her shoot locations.

Jake Gyllenhaal: Jake named his two rescues after characters in the book "To Kill a

Pawz-Itively Sharp



Lin Sharp co-author of "Hey! Can You Hear Us? Messages from Animals"

Mockingbird." Jake says he did not have pets while growing up but after shooting "Brokeback Mountain" felt he was ready for a dog. His two dogs are Atticus, a German shepherd, and Boo Radly.

George Clooney and Amal: Their dog Millie, a Bassett hound, was found begging for scraps outside a California restaurant. They found her on Petfinder, the number one website for adoptable pets. Millie joins Einstein, another rescue dog. The story is that George rubbed turkey meatballs on his shoes to prove to the shelter that the dog liked him!

Hugh Jackman: Hugh maintains a close bond with dogs Allegra and Dali, and he is very often photographed with both of them. He Skypes them when away from home. Hugh actively supports rescue organizations.

Not be outdone, our own rescue, a Chow and Australian Shepard mix, Saleem is ten years old and loves to run through the woods with his dad and other dogs on trails at Bent Creek. Saleem followed me home from a long walk when I lived in Houston. After a few early food incidences with tricks learned by his earlier stint as a starving dog, Saleem has become a perfect angel dog and gives us many hours of enjoyment.

If you have a heartwarming story about a rescue I would love to hear from you. lin@pawz-ativelysharp.com.

Lin Sharp, co-author of "Hey! Can You Hear Us? Messages from Animals" and "Fly Bird Fly" - available from Amazon or from Crystal Spectrum Publications, Lin blogs about pets at www.PawzItivelySharp.com.

KATE VanNOORDEN
ORIGINAL SCULPTURE



Commission a Unique
Custom Sculpture

All Pets • All Breeds • Groupings
Memorial Urns • Full Body
Head & Shoulders • Family Scenes



www.vannoordensculpture.com

561-744-5902

vannoordenk@bellsouth.net

(828) 423-9635 **Free Initial Consultations**

Training from
**THE DOG'S
PERSPECTIVE**

KATHRYN R. GUBISTA, PhD

Private Puppy/Dog Training Sessions
Puppy/Dog Walking & Dog Running Services
Pet Sitting & Residency Training

LuckyDogTrainingAsheville.com

Fast Cat
PHOTOGRAPHY STUDIO

We come to your location to create wonderful portraits of your **furry friends**. We also create photographic images for businesses and families.

Louise St Romain
PHOTOGRAPHER

828.388.7383
images@fastcatstudio.com
www.fastcatstudio.com

CERTIFIED **PFA**
Professional Photographers of America

The Mobile Photography Studio!

CHARLOTTE STREET ANIMAL HOSPITAL

**208 Charlotte St.
Asheville, NC
828-232-0440**

Compassionate Care for Asheville's Pets and Their People

- ♥ Wellness Packages
- ♥ Emergency Care
- ♥ Surgery & Ultrasonography
- ♥ Physical Rehabilitation
- ♥ Exotic Reptiles & Birds
- ♥ Exotic Mammals
- ♥ Alternative Healing Modes
- ♥ Evening and Weekend Hours

- ♥ Stem Cell Regenerative Medicine
- ♥ Acupuncture & Chiropractic
- ♥ Puppy Preschool Classes
- ♥ Certified Cat-Friendly Practice
- ♥ Traditional Chinese Medicine
- ♥ Laser Therapy
- ♥ Preventive Care
- ♥ Holistic Care

www.charlottestreetanimalhospital.com

BIG Biltmore House housed BIG dogs

Pets were always a part of life at Biltmore. A parrot name Coco was in residence in the Winter Garden. And Cornelia Vanderbilt even had a pet skunk for a while. But George Vanderbilt, owner of America's largest home, evidently felt it deserved to have some of the world's largest dogs around.

In addition to sheepdogs, Biltmore was home to Russian wolfhounds, Irish wolfhounds, and St. Bernards. George Vanderbilt's first pet was a St. Bernard named Cedric, who was particularly beloved by family and friends alike. Cedric had free reign of at least the first floor of Biltmore House, which provided



Cornelia Vanderbilt and a St. Bernard, c. 1910. The family's St. Bernards appear frequently in archival photos.



An unidentified friend (on the right) explores Biltmore Estate with George Vanderbilt, his St. Bernard, and an Irish wolfhound, c. 1906.

more than enough roaming room, even for a pet as big as he was. He often spent time lounging in the library, or sunning himself on the Loggia, but always took care of his unofficial duties when they needed attention.

Cedric greeted guests when they came to visit, and was a frequent companion of family members, friends, and other Vanderbilt dogs on long walks around the huge estate. (Although the property is now "only" about 8,000 acres, it was more than ten times that large until much of it was sold to the government in 1914.) In addition to his other duties, Cedric sired a second generation of

Biltmore St. Bernards, which impressed Joseph Hodges Choate, American Ambassador to Great Britain. While a guest at Biltmore House, Choate wrote to his wife, "I wish you could see these great St. Bernards – five of them, father, mother and three children, all big and splendid. They seem to fill the billiard room and are most affectionate."

Although family St. Bernards, especially Cedric, are no longer freely roaming the Biltmore Estate or lounging on the Loggia, they are still represented. Today, Cedric's Tavern on the estate is named after the Vanderbilt's beloved first St. Bernard.

Photos courtesy of The Biltmore Company.



Edith Vanderbilt, far left, and George Vanderbilt, far right, share afternoon tea on the Loggia with friends, family and family pets, September, 1900.

Dog Fanciers support Paws for Patriots

In 2015, the Western Carolina Dog Fanciers Association (WCDEFA), an affiliate of the American Kennel Club, donated \$1000 to Paws for Patriots, a program of the Southeastern Guide Dogs Association that provides service dogs to help wounded veterans.

The money donated to Paws for Patriots was raised from the proceeds of the annual Bark in the Park in Sylva. That event draws participants from all over Western North Carolina. The always-family-friendly activities include both educational demonstrations and chances to participate in games and contests.

The overall Paws for Patriots program has four sub-programs that provide different, specialized support to men and women, both active and retired, who have served in America's military.

Guide Dogs are paired with visually impaired veterans. Veterans live and learn on campus, then receive lifetime follow-up and support. Most leave with a new spring in their step and a wider smile.

The **Service Dog Program** trains and places exceptional dogs into careers benefiting veterans who suffer from Post-Traumatic Stress Disorder (PTSD). **Facility Therapy Dogs** are placed into military hospitals to spread cheer and encouragement and help wounded warriors heal. Nothing brightens their day like the unconditional love of a warm and wagging dog. **Emotional Support Dogs** help veterans improve their physical, social, and emotional wellbeing as they find companionship, relieve loneliness, and help mitigate chronic stress, anxiety, depression, or other limitations.

The next major WCDEFA event is a Dog Show and Rally/Obedience Trial scheduled for April 23 and 24, 2016. For more information, visit www.wcdffa.org.

Group. Private, and In-Home Dog Training



Professional Training with Guaranteed results!

CALL TODAY for more information

828-222-2222



WOOF
— in the —
WOODS
NATURAL PETS

NATURAL FOOD
SUPPLEMENTS
TRAINING

Natural Foods
Toys
Supplements
Gifts
Pet Supplies
Training and more!

Great life for your pets through respect, training, & good health!
1451 Charlotte Highway in Fairview | www.WoofintheWoods.com



**Exclusive Feline
Mobile Grooming**

Kim Burress

**Certified
Feline Master Groomer**

**Serving Buncombe and
Henderson counties**

*Because our focus is
on cat grooming,
we can offer a relaxed
and attentive atmosphere
for each of our clients.*

**Schedule Your
Appointment Today
(828) 329-0299**

www.callingallcatsnc.com



**Weekly
Handling Classes**

Learn how to conduct yourself
and present your dog
in the show ring for
Conformation Judging.

We advocate responsible
breeding and spay/neuter
for canine health.

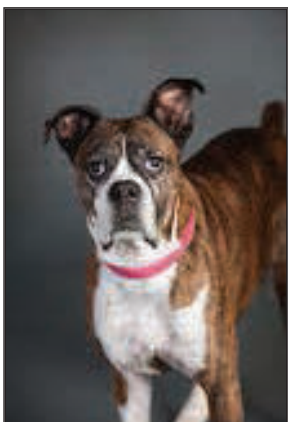
AshevilleKennelClub.com
AshevilleKennelClub.com

**LIKE LOCAL DOG SHOWS?
SUPPORT YOUR LOCAL
KENNEL CLUB**

Pet Obituaries

from Pet Cremations of Western Carolina

Shelby Welborn was a boxer with spunk and style. She loved travel – especially to Myrtle Beach, a good meal, and meeting people. Most of all, she loved her large family. Shelby was a working dog who enjoyed traveling with her police partner/mom, Deb, during their 11 years with the Asheville Police Department. Shelby's passing over to the Rainbow Bridge on December 17th leaves broken hearts for her Moms Deb Welborn and Jean McNeil, Mom Annette Celender, Grandmother Edna Welborn, and Fur-sisters Kasey and Emmy. She was 12 years old.



Shelby

Diamonds was so loved that she willed herself to stay with Alexandra and John Kiefer for 15 years! Her time with them was filled with love and respect. Diamonds crossed over to Rainbow Bridge on December 2nd. She leaves behind devoted human parents who miss her a lot, but rejoice in many wonderful memories.



Diamonds

Carolyn and Coy Arrington said goodbye to 13-year-old **Bella** on December 15. She is mourned by her people-parents and puppy-brother, Jake. Shelly was preceded in death by her puppy-brother, Joey.

Puppy was the heart of her family. A sweet pomeranian-blend, she was 15 years old and greatly loved by her people-mom, Kathy Mitchell, and her people-sister, Heaven Dunne. She said goodbye on December 3rd, but she will be with them always. Nancie Liles, C.F.C.

Harley was a precocious toy poodle who brought a lot of happiness to Frank Spring for 16 years. Franks said goodbye to Harley on November 11th.

Adorable little **Penny** passed away on November 11th. She was loved by her people-parents, Sondra and William Allison.

Kobe Bryant Boyd was 90 pounds of pure love for Sharon Boyd. Kobe passed away on November 24th.

Candy was the canine-child of Eileen Schwabe. At the age of 15, Candy joined many of the beloved pets Eileen has loved and cared for over the years. Candy was a gorgeous sheltie who captured Eileen's heart at birth. She passed away on October 17th.

PET CREMATIONS OF WESTERN CAROLINA

A SHULER FAMILY SERVICE

A Final Act of Caring...

When it's time to say goodbye... we treat your pet with the same care, dignity and respect we provide for our own.

We offer burial, cremation, and memorialization items to help you through a difficult time.



Funeral Director Paul Luck with Pet Therapist Fred at Shuler-Forest Lawn.

How may we help you?

828-693-5220

Nancie@Shuler-ForestLawn.com

4 PAWS FAREWELL

Mobile Pet Hospice & Home Euthanasia

828.707.4231 | 8 a.m. to 8 p.m.

Our goal is to provide your pet with a *compassionate and dignified* passing in the comfort of familiar surroundings and loved ones.

We are also dedicated to providing pet hospice to those pets that need assistance with end of life issues that may require medical attention and guidance.

Dr. Beth Marchitelli
Dr. True Ballas



www.4pawsfarewell.com



Best Friends
Pet Cemetery & Crematory

Give Your Pets
the Memorial They Deserve.

We will help you personalize your ceremony.

- Full-Time Licensed Funeral Directors On Staff
- Available To Assist You 24/7
- Your Pet Remains In Our Personal Care & Is Not Sent Out Of State
- Pet Cremated Remains Are Returned Within 48 Hours

828-665-4303

www.bestfriendspetcemetery.com



Caring For All Members Of Your Family
Green Burial Certified | Cremation and Burial Services
Quality Service at a Fair Price

828-667-8717 | www.moorefh.net

Table Scraps Meet Your Competition

Because Pets Are Family, Feed Them Like Family

Take a bag of dog treats and smell them.
If you are adventurous, taste them.
Does it taste like anything you
would enjoy?

Finest Fetch offers flavor with
high drool factors for dogs and
wonderful, familiar tastes aromas
for their owners. Our savory treats
include Chicken with Blue Cheese,
Tacos and PB&J.

Sure, there are plenty of treats that keep
dogs healthy. Then there's Finest Fetch, dog
treats with flavors chock full of the best quality,
human-grade ingredients, vitamins and minerals
recommended to keep our pets strong, active
and happy.

We've gone the extra mile to give you
extraordinary flavors dogs and owners love.

Special Offers On All

Biscuits | Ride-Hearts

Gunny Sticks | Training Treats

www.finestfetch.com/gazette



Finest Fetch

because pets are family

4681 Yadkinville Rd. Pfafftown, NC 27040



Ask your pet store if they stock us?
www.finestfetch.com/Wholesale

